

Tracking Mate T366G and T366L Wire Harness Installation Guide



Contents

1 **Overview** 3

2 **Installation Instructions**..... 3

3 **Mobile Push NOTIFICATIONS**..... 3

4 **MS03 Tracking Platform** 4

Getting Started

1 Overview

The “Wire Harness” for the T366G and T366L are a custom made exclusive accessory for these two trackers. The harness provides customers with an easy install product, removing the need for profession installation.

2 Installation Instructions

What to do when you receive your Tracker

1. The tracker comes with a wiring harness. Install the harness to permanent power supply, (12-36Volt).
2. Install the tracker in your application, the T366G tracker with internal antenna is fitted with a high-end Ublox GPS Chipset. These work well inside caravans, under car bonnets. They are not designed for solid metal box's. Once it is installed and activated, you can see the signal strength for both GSM and GPS
3. What the tracker is powered up, you will see two flashing lights, 1 blue (GPS) and 1 green (GSM). If the green and blue flash for 0.1 seconds, and off for 3 seconds, you have GPS and GSM signal. (Refer to user manual online)
4. Activate your tracker, Your tracker has a unique IMEI number which can be locate on the tracker and the box it was shipped in. You will need the IMEI number (Side of box or back of tracker) and drivers licence. Activation is done via our website, www.trackingmate.com.au/activate
5. After the tracker is activated, staff from Tracking Mate will program your tracker to suit your application. Once the parameters and programing is completed, you will receive an email with your log-in details for the tracking platform. Please allow 24hrs for activation. If urgent, please contact our office.

3 Mobile Push NOTIFICATIONS

MS03, Mobile Phone App settings

When you install the MS03 app, it is defaulted to send a notification for all events.

Downloading the MS03 IOS App

Logging into the MS03 APP

How to change the notifications?

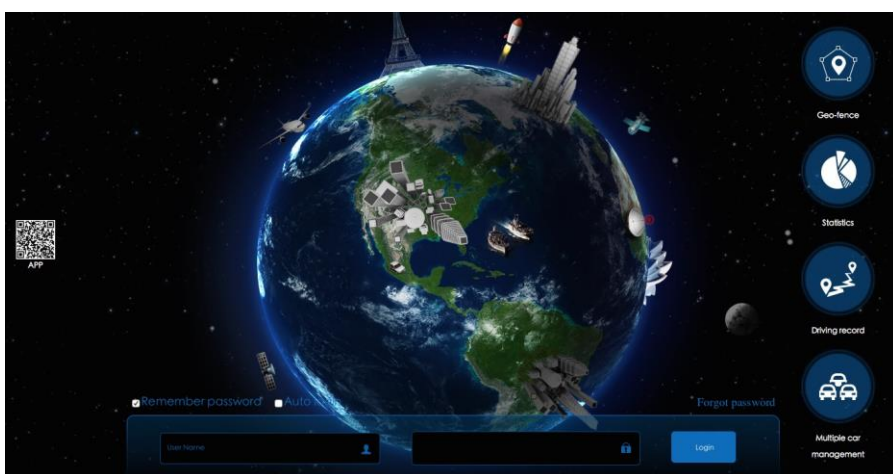
1. Open you MS03 App on your phone
2. Select settings from the pull down menu (Top left corner)

3. Open "Push Notifications"
4. Select the alerts/notifications that you would like to receive
5. Make sure you save these setting by pushing the tick in the top right corner.

4 MS03 Tracking Platform

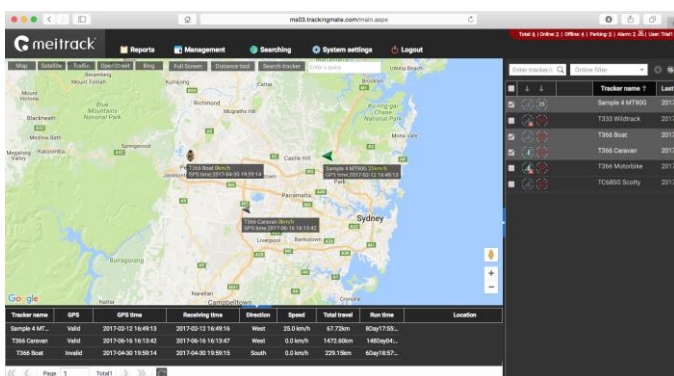
For further information on the tracker and MS03 webplatform MS03 mobile APP, please down load the manual from our website

Visit website - <http://ms03.trackingmate.com>



Enter the user name and password provided as per your customer set up information and log in. Your tracker has already been entered into the program.

You will be taken to this screen where you will be able to see the map and location of your tracker.



If you have any questions, do not hesitate to email us at support@trackingmate.com.au